



MODEL ATTACHED PHOTO AND VIDEO

- Send for each nomination the photos requested in this attachment, both in number and framing;
- Photos must be of high quality and under no circumstances must they be modified or taken with corrective filters;
- They must be sent by email to the following address italianlashfestival@gmail.com, it is recommended to use the WeTransfer program to avoid compromising their quality;

11 PHOTOS (JPEG) + 1 VIDEO (MP4) + 1 MAPPING FOR ALL EYELASH EXTENSIONS

<h1>1</h1>	<p>Photo before the full face treatment. Position front Gaze Central Front view</p>	
<h1>2</h1>	<p>Photo after the treatment Full face Position front Central gaze Open forehead</p>	

3

Photo before treatment With the patches, the model is in a supine position.

YES SPECIFICA THAT THE MAPPING ATTACHMENT A PART ON THE MODEL PROVIDED FROM THE ORGANIZATION. ATTACHED MAPPING checklist



4

A macro (close-up) photo where you press on the eyelid as shown in the photo, or in any way to show the distance from the eyelid.



5

A macro photo during work, which shows the geometry (the opening) of the fan and the attachment



6

An after work photo without patches showing both eyes closed.



7

Macro photo (**up close...no macro lens needed**) of the left eye after work. The model should look slightly upwards to allow for assessment of the inner lash lines, inner and outer corners.



8

Macro photo (**up close... no macro lens needed**) of the right eye after work. The model should look slightly upwards to allow for assessment of the inner lash lines, inner and outer corners.



ITALIAN LASH FESTIVAL

<p>9</p>	<p>THREE photos in jpeg format of your choice.</p>	
<p>10</p>	<p>Record a reel with music of your choice, no longer than 60 seconds, in MP4 format (other formats will not be visible and therefore void, causing scoring penalties).</p>	
<p>11</p>	<p>MAPPING checklist (OBLIGATORY) Attached model from the organizer.</p>	<p>PLEASE ATTACH THE CHECKLIST PROVIDED SPECIALLY, COMPLETE WITH ALL THE INFORMATION REQUIRED FOR EVALUATION BY THE JUDGES.</p>

ITALIAN LASH FESTIVAL

PHOTOS FOR LASH LIFT - BROW LIFT - MEN'S LAMINATION
(9 jpeg photos + 1 Mp4 video + checklist)

1	<p>Front photo before work Full face Uncovered front</p> <p>* Also valid for the eyebrow nomination</p>	
2	<p>Profile photo (close up) before treatment where the curvature is perceived natural eyelashes.</p> <p>* For the eyebrow nomination, a close-up photo is required of the eyebrow arch</p>	
3	<p>Photo of the model lying down with the patches to understand the eyelash conformation</p> <p>* For the eyebrow nomination, a free choice photo is required that exemplifies eyebrow symmetry/ asymmetry.</p>	

4

Photo of the application of eyelashes on the PAD (curler)

* for the eyebrow nomination a photo with possible application of the hair is required.



5

Photo during the application of the product in the first step.

* The same photo is required for the eyebrow nomination



6

A close-up photo of the left eye at the end of treatment is required.

* For the eyebrow lamination nomination, a close-up photo of the left eyebrow arch at the end of the treatment is required



7

A close-up photo of the right eye is required at the end of treatment.

* For the eyebrow lamination nomination, a close-up photo of the right eyebrow arch at the end of the treatment is required



8

Close up photo of the profile at the end of the treatment for exemplify the curvature obtained.

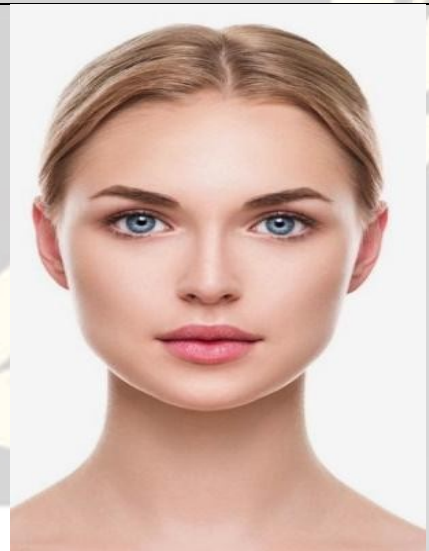
* For the nomination Eyebrow Lamination same photo concentrated on the brow bone to highlight the coverage and evenness of the color of the color



9

Frontal photo, close up, of your choice to best exemplify your work and the result obtained.

* Same photo for Nomination Eyebrow Lamination



10

Record a Reel with music of your choice, no longer than 60 seconds, inMP4 format(other formats will not be visible and therefore void, causing scoring penalties).



SPECIAL STYLING

LADY CHRISTMAS

(12 jpeg photos + 1 Mp4 Video + Mapping checklist)

1

Frontal photo of the model before starting work.



2

Frontal photo of the model after the work is finished



3

Macro photo of the look. Close up photo (no macro lens needed)



4

A macro (close-up) photo where pressure is applied to the eyelid as shown in the photo, or in any way to show the distance from the eyelid



5

Macro photo (**from close...no lens needed macro**) of the eye left after work. The model must slightly turn your gaze upwards to allow the evaluation of the internal lash lines, the internal corner and external.



6

Macro photo (**up close...no macro lens needed**) of the right eye after work. The model must slightly turn your gaze upwards to allow the evaluation of the lash lines internal, of the corner internal and external.



7

A macro photo during work, with which you can do see the geometry (the opening) of the fan and the attachment



ITALY
LASH FESTIVAL

8	5 photos in jpeg format one's own free choice.	
9	Record a reel with Christmas music, no greater than 60 seconds, in MP4 format (others formats will not be visible and therefore null, causing penalties in the score)	
10	MAPPING (OBLIGATORY) Attached model from the organizer	ATTACH THE CHECKLIST PROVIDED SPECIALLY, COMPLETE WITH ALL THE INFORMATION REQUESTS TO BE EVALUATED BY THE JUDGES.

ITALIAN LASH FESTIVAL